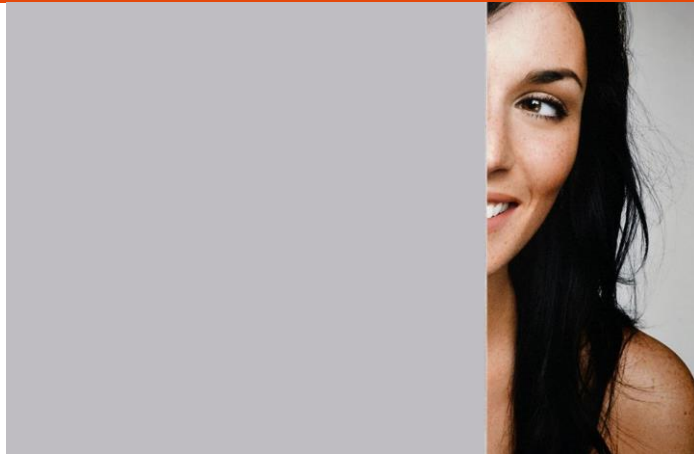


## SOLYX® Glass Finishes SX-3133 Dorian Grey Dusted Crystal



### Product Details

**SOLYX® SX-3133 Dorian Grey Dusted Crystal** is a light grey translucent vinyl film with an etched surface that simulates etched glass. Manufactured from premium cast vinyl, it is ideal for privacy, decorative, or architectural applications and can be installed both on interior and exterior glass.

### Flammability Rating

This product meets ASTM E84 and is classified as Class A as defined in NFPA 101, Life Safety Code®.

### LEED Credit EQ 4.1 Low Emitting Materials, Adhesives & Sealants

This product has zero VOC content according to 40 CFR 59, Subpart D (EPA method 24).

### Product Description

**SOLYX® SX-3133 Dorian Grey Dusted Crystal** is a light grey translucent vinyl film with an etched surface that simulates etched glass. It is an excellent privacy film that obscures visibility.

#### Specifications

Product Code	SX-3133
Product Family	Frosted
Film Type	Vinyl
Adhesive Type	Pressure-Sensitive
Usage	Interior or Exterior
Available Width(s)	60" (1524mm)
Full Roll Length	150 linear feet (45.72m)
Thickness	2 mil
Shading Coefficient	.22
Visible Light Reflectance	4%
Visible Light Transmission	3%
UV Transmission	0%
Solar Heat Reflectance	7%
IR Transmission	12%
Solar Heat Absorbance	27%

### Installation and Warranty

#### Installation

Installation should be in accordance with the manufacturer's installation instructions. This film is applied using the same tools and techniques used for installing window tinting films.

#### Warranty

This **SOLYX®** product will be free from defects in material and manufacture for a period of five (5) years for interior installation and three (3) years for exterior installation. See warranty information for specific details.

### Product Distribution and Contact Information

#### Distribution

**SOLYX®** Decorative Films are available through authorized Installing Dealers, Distributors, or directly from Decorative Films, LLC.

Samples submitted upon request.

#### Contact Information

Decorative Films, LLC  
1-888-657-5224  
[www.decorativefilm.com](http://www.decorativefilm.com)

### Product Construction

#### Face Film

2 mil Cast Vinyl

#### Adhesive

Adhesive Clear, Pressure-Sensitive

#### Release Liner

Transparent, Synthetic, Plottable

## PERFORMANCE & PHYSICAL DATA

PROPERTY	TEST METHODS	TYPICAL VALUE	
<b>SURFACE FINISH</b>	Gloss Meter 60° Reflection	4 - 20	
<b>THICKNESS</b>	Micrometer, Federal Bench Type	2-mil (50 micron)	
<b>TENSILE STRENGTH</b>	Tensile Tester with 2-in (51 mm) jaw separation; crosshead speed of 12 in/min. (5.1 mm/s), web direction	≥ 4.5 lb/in width	≥ 0.8 kg/cm width
<b>ELONGATION</b>	Instron Tensile Tester as above	≥ 150%	
<b>SHELF LIFE</b>	Free from excessive moisture, temperature, direct sunlight	3 Years from factory shipment	
<b>APPLICATION TEMPERATURE RANGE</b>	On clean, dry substrate	40°F to 90°F optimum	10°C to 30°C
<b>HUMIDITY RESISTANCE</b>	Applied to etched aluminum panels 24 hours prior to testing. 100% relative humidity 100° (38°) for 500 hours	No appreciable effect	
<b>DIMENSIONAL STABILITY</b>	158°F (70°C), 48 hours	0.010 – 0.020 in	0.25 – 0.50 mm
<b>PEEL ADHESION</b>	PSTC-1, 15 min	60 oz/in	.65 kg/cm
<b>LINER RELEASE</b>	TLMI, 300 in/min (127 cm/min) 2 in (51 mm) wide sample	150 g/2 in	30 g/cm

## PHYSICAL PROPERTIES

### Outdoor Durability

9 years when properly processed and applied (vertical exposure, unprinted film)

### Minimum Surface/Ambient Air Application Temperature

40° F. (38° C)

### Service Temperature Range

-40° F. to +225° F. (-40° C. to +107° C.) - Reasonable range of temperatures, which would be expected under normal environmental time and temperature conditions

### Typical Film Caliper (w/adhesive)

.0025 to .0035 inches

### Chemical Resistance

Resists mild acids, alkalis, and salts.

### Water Resistance

Excellent resistance to water.

**NOTE: Always pretest your specific substrates prior to actual application.**

### Shelf Life

3 years when stored in a clean, dry area, out of the direct sunlight, and at less than 100° F. (38° C)

